

NEW GUINEA GOLD CORPORATION

UPDATE SEPTEMBER 2006

- Gold production at the Sinivit Project at an annualised rate of 35,000ozs gold expected by January 2007
- Promising copper/molybdenum mineralisation at Simuku and Mt Nakru properties
- 12 gold, copper, molybdenum projects – 64,000m of drilling has defined extensive mineralisation - continuous operation of 5 drills later in 2006 planned to define resources
- Initial mine expected to have high grade, open pittable mineralisation – simple vat leach processing
- Mine cash flow to fund exploration drilling/resource definition
- Recent high grade drill intersections at Imwauna (Normanby) Project
 - 6m at 68g/t gold and 69g/t silver including 3m at 106g/t gold,
 - 6.45m at 21g/t gold and 50g/t silver,
 - 0.4m at 438g/t gold and 485g/t silver within 5.6m at 36g/t gold and 45g/t silver

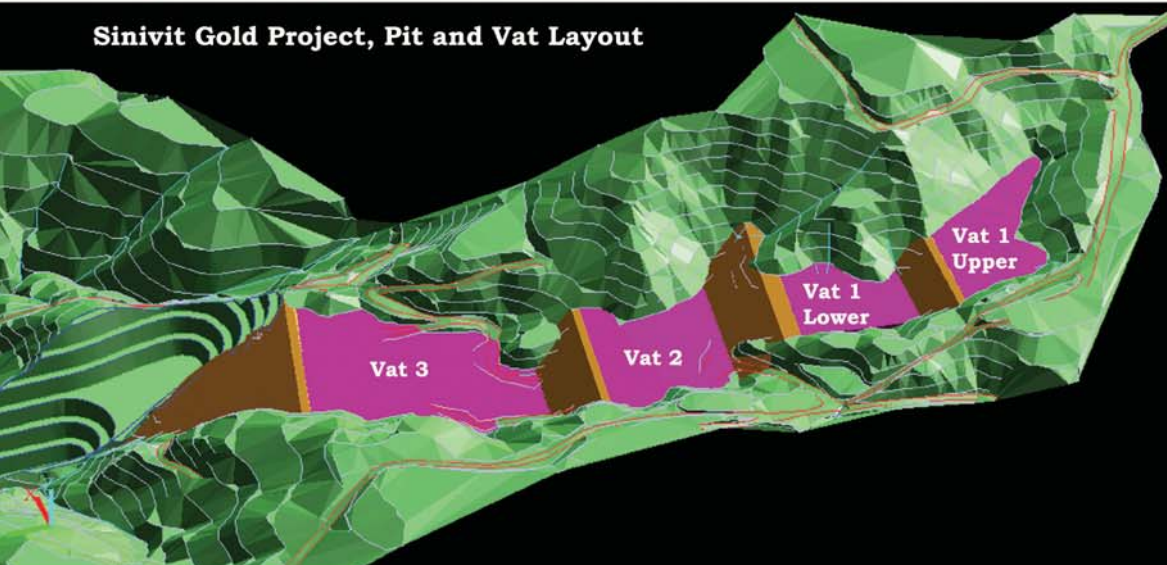
Management cautions that in this brochure there are forward looking statements and conclusions which may not eventuate. For more complete details and independent technical reports on the projects refer to www.newguineagold.ca

The Company is involved in mineral exploration and mine development in Papua New Guinea. The Company has six key, advanced projects: Sinivit, Normanby, Sehulea, Mt Penck, Simuku, and Mt Nakru in which it owns a majority interest and which have had substantial testing by both drilling and surface trenching. The initial four projects are gold and the other projects are copper/gold/molybdenum with significant other metal credits.

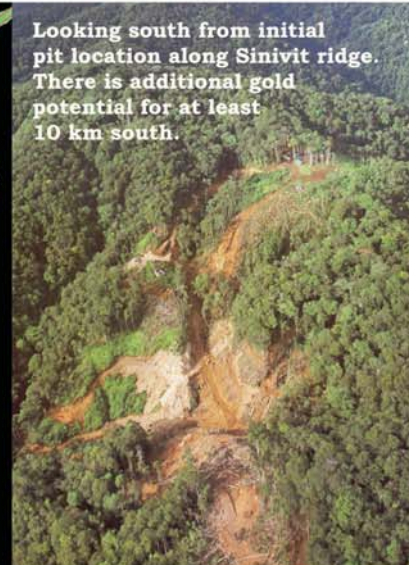
The Company is focussed on rapidly defining resources at, and developing to mining, four of the advanced gold projects. The Sinivit Project mine development and construction is expected to be complete by November 2006 with gold production by early 2007 at an annualised rate of 35,000 ozs. Drilling to expand resources will commence fourth quarter 2006.

The Company also has interests of up to 50% in six other projects. Four of these projects are operated by the Company on behalf of itself and joint venture partner, Vangold Resources, and a further two projects are at present being sole funded by Vangold Resources and Celtic/Triple Plate Junction respectively.

Sinivit Gold Project, Pit and Vat Layout



Looking south from initial pit location along Sinivit ridge. There is additional gold potential for at least 10 km south.



LISTINGS: TSX Venture Exchange - **NGG**, Berlin - Frankfurt - **NG8**, USA Pink Sheets - **NGU GF**

TSX-V - NGG

www.newguineagold.ca

NEW GUINEA GOLD CORPORATION

Papua New Guinea represents one of the most enriched copper and gold sections of the earth's crust, and ranks ahead of countries such as Brazil, West Africa, Indonesia, Chile and the Philippines, according to Placer Pacific Exploration Manager Greg Hall (1995). Mr Hall also stated "Placer believes that Papua New Guinea offers a suitable reward for the risk of investment in exploration and future mining". The country hosts a relative abundance of world class deposits such as:

Porgera (Placer and others)	- Approx 30M oz contained Au
Lihir (RTZ and others)	- Approx 45M plus oz contained Au
Panguna (CRA)	- Approx 16M oz & 5Mt contained Au & Cu respectively
Misima (Placer)	- Approx 5M oz contained Au
OK Tedi	- Approx 10M oz & 5Mt contained Au & Cu respectively
Wafi (Harmony)	- Approx 9M oz & 1.6Mt of contained Au & Cu respectively
Hidden Valley (Harmony)	- Approx 2M oz Au
Tolukuma (D.R.D.)	- Approx 1.5M oz Au
Kainantu (Highlands)	- Approx 2M oz Au
Nene/Trukai (Highlands, Noranda)	- Approx 4.5Mt Cu

Mining in Papua has been continuous for the past 30 years and there is a well established mineral exploration industry and infrastructure. There is the proven ability to build and operate mines, clear reporting and tenement tenure guidelines and the ability to return profits to shareholders. Papua New Guinea obtained independence from Australia in September 1975. The system of government is a British parliamentary democracy. The legal system is based on English common law. The current elected government is encouraging foreign investment, especially in mining.



First Mine - SINIVIT

- Mining commences last quarter 2006 with gold production expected by early 2007, head grade 5g/t gold, initially open pit, vat leach processing.
- Resources - Indicated, 713,000t @ 5.7g/t gold for 132,000 oz gold and Inferred, 340,000t @ 3.2g/t gold for 35,000 oz gold.
- Later production may be of gold/telluride mineralisation by underground mining, possible head grade 10 - 12 g/t gold.
- Mine development commenced, 35,000 oz gold expected to be produced in first 12 months at an operating cost of AU \$160/oz. Present gold price (28/09/06) is approximately AU \$800/oz, giving an operating cash surplus before cost of capital and tax of AU \$640/oz gold produced (US\$480).
- Drilling which may increase resources commenced last quarter 2006.

These evaluations are preliminary in nature and are based entirely on indicated mineral resources which have not been categorised as mineral reserves. There is no assurance that the operating and financial projections in the preliminary assessment will be realised. Mineral resources that are not reserves do not have demonstrated economic viability. Measured and indicated mineral resources are that part of a mineral resource for which quantity and grade can be estimated with a level of confidence sufficient to allow the application of technical and economic parameters to support mine planning and evaluation of the economic viability of the deposit. An inferred mineral resource is that part of a mineral resource for which quantity and grade can be estimated on the basis of geological evidence and limited sampling and reasonably assumed, but not verified.

Preparing for Vats

Constructing Drainage for Below Vat

Constructing Haul Roads



NEW GUINEA GOLD CORPORATION

IMWAUNA (Normanby)



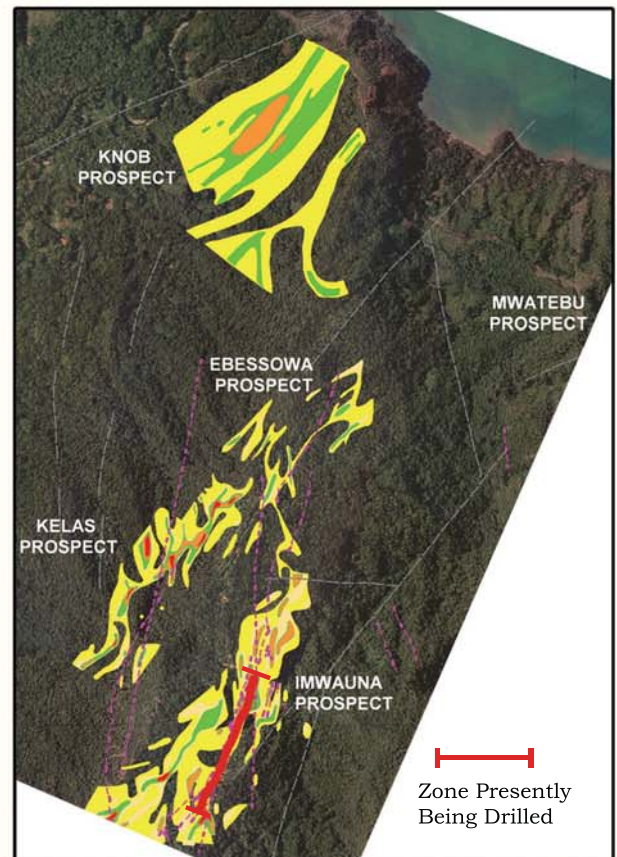
Trial mining slot and bulk sample confirmed gold grade from trenching and drill hole.

- **Recent drill hole intersection of 3m at 106g/t gold.**
- **Historical inferred resource of 990,000t at 6.1g/t gold and 12g/t silver for 194,000 oz gold and 382,000 oz silver.**
- **Drilling to define the potential of the property is in progress and will continue throughout 2006. New resource figure expected early 2007.**
- **Best drill results such as 3.7m at 94.4g/t gold, 6m at 68g/t gold, 6.45m at 20.9g/t gold.**
- **Trial mining completed - had an average grade of 14.1g/t gold over a 2.2m mining width.**
- **Bulk sampling of 38 excavator trenches over 1,240m strike length averaged 26.4g/t gold over an average of 1m width in central high grade part of system.**
- **Recent drilling suggests possible open pittable grade of 6 to 10g/t gold and underground grade of 15 - 30g/t gold.**

New Guinea Gold Corporation has disclosed historical resource estimates for the Imwauna (Normanby) project. However, these resource estimates have been based on historical estimates and have not been verified and supported by NI 43-101 compliant, independent technical reports. As such, the historical resource estimates cannot be relied upon until they have been verified and supported by NI 43-101 compliant technical reports.

Air photo (to the right) showing relative position of Imwauna drilling zone and the coast (about 3 km).

Anomalous gold geochemistry in colour shows the potential of the district. **Most has yet to be drilled.**



Mt Penck

- **Drilling at Mt Penck Project (60% NGG) has encountered wide potentially bulk mineable intersections. (see website)**
 - **20m at 2.3g/t gold**
 - **23m at 2.3g/t gold**
 - **20m at 2.1g/t gold**
 - **4m at 18.7g/t gold**
 - **4m at 8.0 g/t gold**

Brief History of NGG's Projects

Most of the projects in NGG's portfolio were originally discovered and partly explored by Esso Papua New Guinea (Exxon Minerals), City Resources Ltd and Macmin Silver Ltd. On June 13th 2002, NGG acquired the projects from Australian listed company Macmin Silver Ltd (www.macmin.com.au). Macmin still holds a substantial interest in the projects through a major shareholding in NGG. Substantial and detailed exploration has been completed on most projects (see table on back page) and at least US\$30 million has been expended by NGG and earlier explorers to bring the projects to their present advanced state. Bob McNeil, CEO and Chairman of NGG was General Manager for Esso in Papua New Guinea from 1980 to 1986. NGG operates in PNG through wholly owned PNG company, New Guinea Gold Ltd (formerly Macmin PNG Limited).

NEW GUINEA GOLD CORPORATION

Table of Current Projects

TENEMENT AREA	(KM ²)		OWNERSHIP
SINIVIT PROJECTS	3.536	Quartz telluride gold system.	90% New Guinea Gold
ML 122		18067m of diamond core drilling and 2987m of reverse circulation drilling. Mining lease and all environmental permits are in place. Mine development commenced in 2005. Representative drill holes include: 22m at 4.4g/t Au, 13m at 12.4g/t Au, 8m at 2.01g/t Au, 5.8m at 13.54g/t Au, 1.3m at 104g/t Au.	10% Gold Mines of Niugini Holdings
Mining Area	43		
EL 1140			
Exploration Area			
EL 1362	106	Property adjoining Sinivit licences	100% New Guinea Gold
NORMANBY PROJECT	44.2	High grade vein swarm system	100% New Guinea Gold
EL 1091		Approx 140 drill holes (3993m) at two (2) prospects Best drill results: 3.8m at 27.3g/t Au; 7.2m at 16.59g/t Au; 3.7M AT 94.4g/t Au. ~2500m of trenching	
SEHULEA PROJECT	30.5	60 holes drilled (2250m) at six (6) prospects. Best intersections inc 27.7m at 2.07g/t Au; 14m at 4.56g/t Au; 21m at 3.59g/t Au >2000m of trenching , best results: 164m at 3.96g/t Au, 16m at 20.3g/t Au	100% New Guinea Gold
EL 1069			
SIMUKU PROJECT	44	Porphyry copper system	90% New Guinea Gold
EL 1077		25km of trenching 12 holes drilled (1481m). Best intervals: 276m at 0.33% Cu; 40m at 0.64% Cu; 50m at 0.5% Cu; 63m at 0.52% Cu; 150m at 0.35% Cu.	10% W.S. Yeaman
MT NAKRU PROJECT	47	Porphyry copper/gold system	75% New Guinea Gold
EL 1043		44 drill holes (6420m) at two (2) prospects. Best drill results 74m at 0.78% Cu; 8.6m at 1.34g/t Au; 94m at 0.46g/t Au and 0.43% Cu; 44m at 0.85% Cu. Approximately 5 km of trenching ; Best test results 45m at 2.5g/t Au; 245m at 0.8g/t Au; 3m at 17g/t Au; 23m at 1.43% Cu; 4m at 6.6% Cu.	25% Vangold
MT PENCK PROJECT	101	60 drill holes (3794m): Best intervals 72m at 1.79g/t Au and 12.9g/t Ag; 2m at 36.7g/t Au; 43m at 2.35g/t Au >2km trenching: Best trench results such as 5m at 60g/t Au within 40m at 8.89g/t Au; 97m at 3.39g/t Au.	60% New Guinea Gold
EL 1322			40% Vangold
ALLEMATA PROJECT	243	Mesothermal quartz veins + Au-Cu skarn 17 drill holes: ~1120m drilling. ~2km trenching. Trench results such as 30m at 9.0g/t Au; 84m at 1.53g/t Au and 4m at 100 g/t Au.	50% New Guinea Gold
EL 1323			50% Vangold
BISMARCK PROJECT	206	Porgera type disseminated Au + high grade Au veins	50% New Guinea Gold
EL 1320		11 drill holes (1158m) ~1500m trenching. Best trench results such as 90m at 1.42g/t Au; 20m at 6.99g/t Au.	50% Vangold
FERGUSON PROJECT	470	86 drill holes on 6 prospects Best drill results: 10m at 8.14g/t Au (incl. 3m at 20.82g/t Au) 12m at 5.88g/t Au	50% New Guinea Gold
EL1324			50% Vangold
YUP RIVER PROJECT	378	Reconnaissance stream sampling outlined 3 large gold anomalies	50% New Guinea Gold
EL 1329			50% Vangold
CRATER MOUNTAIN PROJECT	40	Similar geology to Porgera	100% New Guinea Gold
EL 1115		1969m drilling. Best results: 115m at 1.83g/t Au 2m at 52.6g/t Au & 24m at 6.55g/t Au	Celtic/Triple Plate Junction earning 75%
FENI PROJECT	37	Similar geology to 40M oz gold Lihir Mine	50% New Guinea Gold
EL 1021		180 drill holes (16,413m). Typical results such as 188m at 1.2g/t Au; 10m at 5.56g/t Au in drill hole	50% Vangold
			Vangold earning 75%
EL 1331	130	Property surrounding Feni licence.	50% New Guinea Gold
			50% Vangold
			Vangold earning 70%

CONTACTS

Judith O'Quinn - Director/CFO, Vancouver
Phone 604 662 3598 - Fax 604 669 6257
email: ngg@telus.net

Bob McNeil - CEO/Chairman, Australia
Phone 61 7 5592 2274 - Fax 61 7 5592 2275
email: rdmccneil@macmin.com.au

Forbes West - Investor Relations, Phone 888 655 5532 email: forbes@sherbournegroup.ca