



30th March 2009

Head Office:

Suite 422-470 Granville Street
Vancouver, B.C., Canada, V6C1V5
Phone: +1 604.662.3598
Fax: +1 604.669.6257
Email: ngg@telus.net

Australia:

P.O. Box 7996
Gold Coast Mail Centre, Qld 9726
Phone: +61(7)5592.2274
Fax: +61(7)5592.2275
Email: info@newguineagold.ca

Trading Symbols: TSX-V: **NGG**

Frankfurt: **NG8.FSE**

Web Site: www.newguineagold.ca

PRESS RELEASE

WEIOKO GOLD PROJECT PART of a LARGE GOLD MINERALISED SYSTEM

The Weioko Gold Project is a key New Guinea Gold (NGG) gold project and part of the Sehulea Property (100% NGG - Figure 1). The Project has been partly explored to date but the drilled mineralisation represents less than 5% of the known gold in soil anomalous area (Figure 3 - approximately 12 sq kms in area).

The Project is situated on Normanby Island, Milne Bay Province of Papua New Guinea and is 10 km NE of NGG's premier project - the Imwauna Gold Project. Any future development of this project would probably occur in association with development of the Imwauna Project.

NGG is presently mid way through a modest 15 diamond core drill program which is required by government to keep the project in good standing and is targeting definition of higher grade gold zones known in trench; possible extensions of the known mineralisation indicated by geochemical and geophysical surveys; and collecting samples for metallurgical testing. Assay results should become available from mid May.

The results of these holes, when included with results from 29 RC holes and 23 diamond core holes already completed, should be sufficient to allow a resource estimation to be completed in accordance with the guidelines of NI 43-101. The results of all previous holes, using a 0.2g/t gold cut off are shown in Table 1 (these have been previously released).

Previous surveys have included soil geochemistry, rock chip, side looking radar and Induced Polarisation (IP) geophysical surveys (Figure 2). Geochemical soil anomalism covers an area of 6 kms by 2 kms (12 sq kms - as can be seen from Figure 3), and only a very small part of this anomalous area has been tested by either drilling or trenching.

Trench results from Weioko are shown in Table 2.

IP survey results show a well defined anomaly over the drilled mineralisation (Figure 2) and further similar IP anomalies along strike and to the North West.

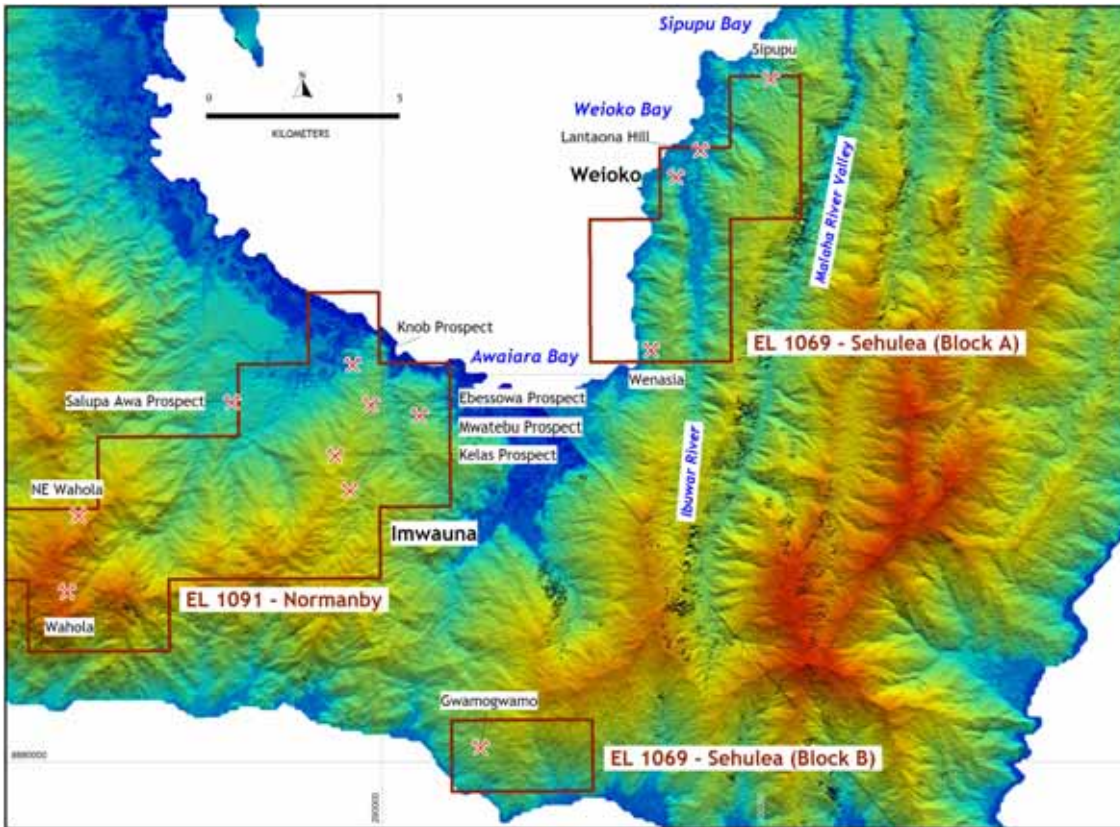


Figure 1

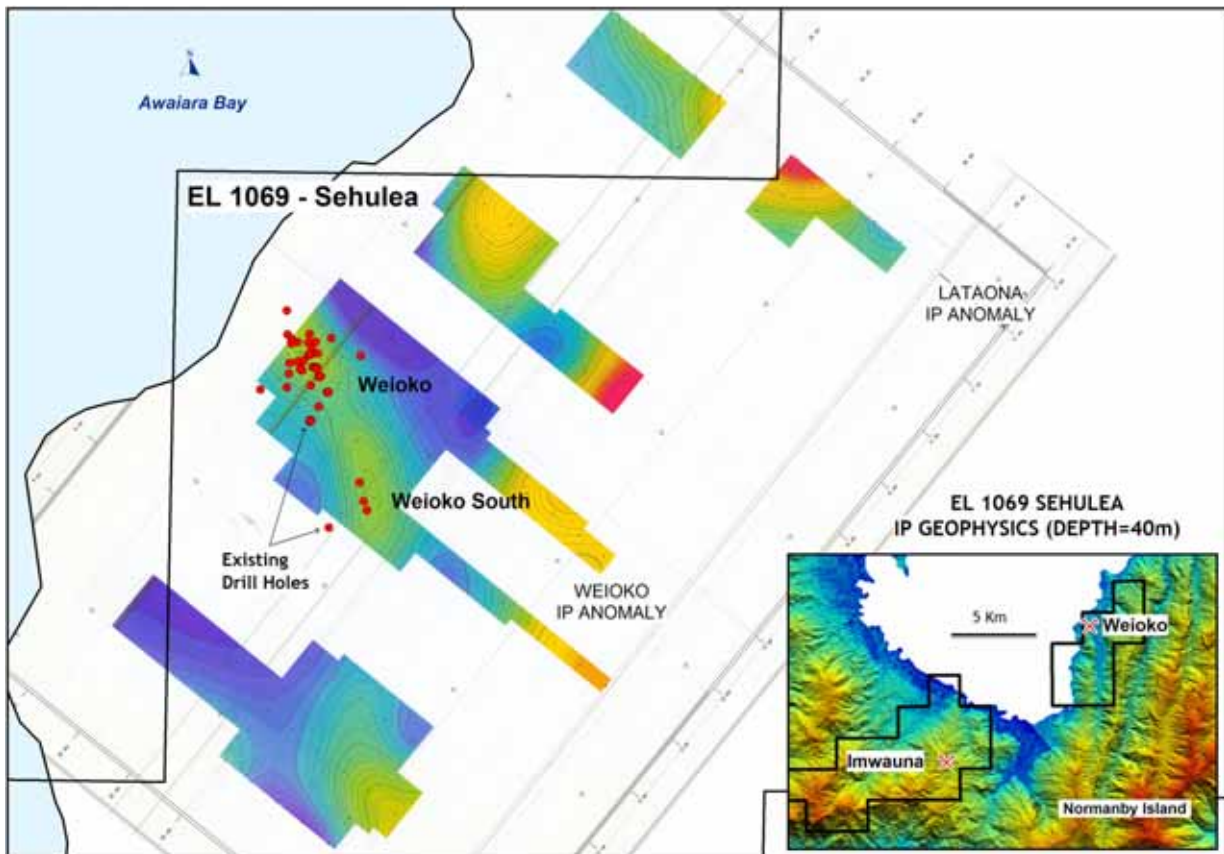


Figure 2

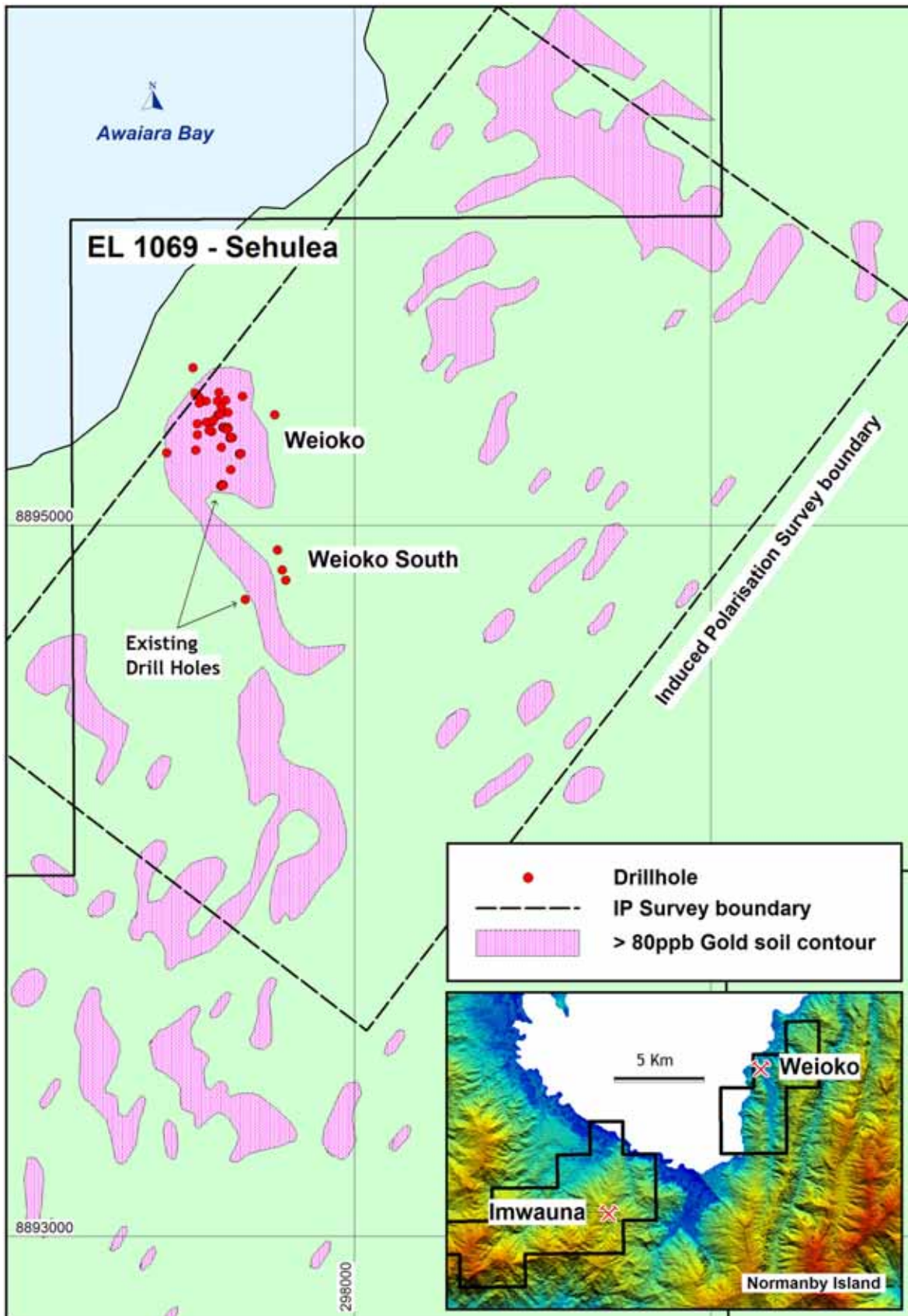


Figure 3

WEIOKO DRILL RESULTS

Historic Drilling, New Guinea Gold Ltd RC & Diamond Core Drilling
(0.2g/t gold cut-off)

Hole No.	Final Depth (m)	From (m)	To (m)	Length (m)	Gold (g/t)	Silver (g/t)
WED001	147.8	0	33.8	33.8	1.01	4.25
	incl.	0	0.7	0.7	3.57	3.00
	incl.	15.8	17.3	1.5	1.47	2.00
	incl.	20.3	29.3	9	2.29	7.50
	incl.	20.3	21.8	1.5	6.99	4.00
		65.4	66.8	1.4	1.14	4.00
		35.3	48.8	13.5	0.32	2.45
		51.8	56.3	4.5	0.49	7.67
		57.8	62.3	4.5	0.36	1.33
		63.8	66.8	3	0.73	4.00
		92.3	96.8	4.5	0.41	1.33
		101.3	105.8	4.5	0.22	0.67
WED002	200.5	4.7	36.5	31.8	0.57	7.22
	incl.	4.7	5.6	0.9	1.00	0.00
	incl.	5.6	6.5	0.9	1.30	4.00
	incl.	9.5	9.85	0.35	2.40	9.00
	incl.	27.5	29	1.5	1.51	8.00
		44	44.5	0.5	0.65	2.00
		50	80.1	30.1	0.37	2.92
		93.5	113	19.5	0.63	3.67
	incl.	96.5	98	1.5	1.47	6.00
		116	137	21	0.76	2.79
	incl.	116	125	9	1.03	3.83
	incl.	122	125	3	1.52	4.00
WED003	131	2.2	54.7	52.5	1.35	11.59
	incl.	20.2	43.4	23.2	2.45	19.55
	incl.	30.7	32.2	1.5	19.90	7.00
	incl.	33.7	38.1	4.4	3.28	76.91
	incl.	40.95	42	1.05	1.35	7.00
		62.2	66.7	4.5	0.75	4.00
	incl.	63.7	65.2	1.5	1.40	4.00
		86.2	107	20.8	0.43	3.04
	incl.	101.2	102.05	0.85	1.03	2.00
	incl.	104	105.5	1.5	1.13	0.00
WED004	140	0	3.9	3.9	0.26	4.85
		5.4	8.8	3.4	0.35	4.00
		12	27.5	15.5	0.44	5.32
		51.5	56	4.5	0.25	1.33
		89	89.1	0.1	1.61	12.00

Hole No.	Final Depth (m)	From (m)	To (m)	Length (m)	Gold (g/t)	Silver (g/t)
WED005	162.7	0	27.7	27.7	1.37	6.99
	incl.	2.1	17.45	15.35	2.02	6.46
	incl.	2.1	4.7	2.6	1.80	10.00
	incl.	6.5	8.9	2.4	2.49	6.67
	incl.	11.9	17.45	5.55	2.94	5.65
	incl.	24.7	25.45	0.75	1.80	7.00
		42.5	53.2	10.7	0.53	3.14
	incl.	51.7	53.2	1.5	1.35	7.00
		56.2	62.2	6	1.11	3.00
	incl.	57.8	59.4	1.6	3.28	3.00
		68.2	78.7	10.5	0.38	2.43
WED006	87.7	60.15	64.25	4.1	0.33	6.00
		67.3	72	4.7	0.40	3.00
		73.55	76.75	3.2	0.56	3.00
WED007	171.6	33.7	36.7	3	0.74	1.00
	incl.	33.7	35.2	1.5	1.15	2.00
		69.7	72.7	3	0.79	2.00
	incl.	69.7	71.2	1.5	1.32	2.00
		75.78	84.7	8.92	0.77	2.17
	incl.	81.7	83.2	1.5	2.00	3.00
WED008	183.3	40.9	43.9	3	0.32	2.00
		45.4	52.9	7.5	0.53	0.00
		56.25	58.95	2.7	0.23	2.56
WED009	177.3	88.9	121.8	32.9	0.47	7.95
	incl.	88.9	90.4	1.5	1.01	4.00
WED010	72	No significant intervals				
WEH001	20	0	20	20	1.09	5.90
	incl.	0	2	2	1.84	4.00
	incl.	14	20	6	1.54	8.00
	incl.	16	18	2	2.05	9.00
WEH002	56	12	54	42	0.82	6.19
	incl.	20	28	8	2.43	6.75
WEH003	70	10	28	18	0.67	4.33
	incl.	12	14	2	1.06	7.00
		30	40	10	1.29	3.40
	incl.	30	36	6	1.90	4.00
		42	70	28	0.67	4.77
	incl.	48	50	2	1.06	4.00
	incl.	60	62	2	1.36	4.00
WEH004	60	2	6	4	0.54	9.00
		8	60	52	1.44	8.69
	incl.	14	16	2	1.77	6.00
	incl.	26	28	2	1.62	12.00
	incl.	30	54	24	2.22	12.17

Hole No.	Final Depth (m)	From (m)	To (m)	Length (m)	Gold (g/t)	Silver (g/t)
WEH005	70	0	4	4	0.71	3.50
		10	70	60	1.54	7.87
	incl.	22	24	2	5.45	50.00
	incl.	26	32	6	1.26	5.00
	incl.	32	34	2	10.30	34.00
	incl.	34	36	2	1.56	6.00
	incl.	40	50	10	1.96	5.40
	incl.	52	56	4	1.87	3.00
	incl.	58	60	2	1.12	3.00
WEH006	48	0	48	48	1.17	4.00
	incl.	2	4	2	1.76	5.00
	incl.	6	18	12	1.60	4.67
	incl.	22	24	2	1.72	5.00
	incl.	26	30	4	1.44	3.50
	incl.	32	34	2	1.26	3.00
	incl.	36	38	2	3.83	7.00
WEH007	60	0	28	28	0.94	9.21
	incl.	4	6	2	1.30	8.00
	incl.	10	14	4	1.19	7.50
	incl.	16	22	6	1.26	14.67
		30	60	30	1.14	7.13
	incl.	32	34	2	1.38	6.00
	incl.	44	46	2	6.18	8.00
	incl.	52	60	8	1.29	5.25
WEH008	70	0	70	70	0.80	4.43
	incl.	2	4	2	1.01	10.00
	incl.	12	14	2	1.24	5.00
	incl.	32	34	2	1.35	5.00
	incl.	52	60	8	2.33	4.75
WEH009	72	0	72	72	0.65	5.19
	incl.	10	18	8	1.07	4.75
	incl.	36	38	2	4.27	18.00
	incl.	52	54	2	1.52	17.00
WEH010	72	0	22	22	0.65	7.36
	incl.	10	12	2	2.36	28.00
		24	72	48	0.69	5.96
	incl.	36	38	2	1.04	3.00
	incl.	50	64	14	1.14	8.38
WEH011	51	0	10	10	0.70	8.20
		12	51	39	0.95	11.36
	incl.	14	16	2	1.15	19.00
	incl.	24	30	6	2.77	27.33
	incl.	32	34	2	1.42	20.00

Hole No.	Final Depth (m)	From (m)	To (m)	Length (m)	Gold (g/t)	Silver (g/t)
WEH012	72	2	38	36	0.86	9.22
	incl.	6	14	8	1.16	14.50
	incl.	24	30	6	1.28	12.00
		46	54	8	0.43	3.50
		66	72	8	0.30	2.00
WEH013	51	0	51	51	0.51	3.51
WEH014	72	0	72	72	0.96	4.64
	incl.	14	24	10	2.27	7.60
	incl.	20	22	2	6.89	21.00
	incl.	46	48	2	1.71	3.00
	incl.	54	58	4	1.44	5.50
	incl.	60	72	12	1.33	4.50
WEH015	50	0	22	22	0.63	4.18
	incl.	2	4	2	1.01	4.00
	incl.	16	18	2	1.34	13.00
		24	34	10	0.90	3.80
	incl.	26	28	2	1.36	5.00
WEH016	75	0	12	12	0.73	3.17
	incl.	2	4	2	1.33	5.00
	incl.	8	10	2	1.30	3.00
		22	30	8	0.42	2.50
		32	50	18	1.25	3.89
	incl.	38	40	2	1.36	4.00
		42	50	8	2.00	5.00
		52	62	10	0.45	3.00
		68	72	4	1.23	32.50
WEH017	50	2	20	18	1.28	3.89
	incl.	8	10	2	1.85	5.00
	incl.	14	16	2	1.08	3.00
	incl.	18	20	2	4.89	5.00
		42	44	2	0.51	33.00
WEH018	72	0	10	10	0.62	3.40
	incl.	2	4	2	1.12	5.00
		26	44	18	0.54	3.11
		46	64	18	0.93	3.89
	incl.	52	54	2	1.41	6.00
	incl.	56	60	4	2.58	7.00
		68	72	4	0.81	1.50
	incl.	68	70	2	1.38	2.00
WEH019	72	0	4	4	0.47	3.50
		8	22	14	0.75	2.71
	incl.	12	18	6	1.17	3.00
		24	30	6	0.32	2.00
		32	46	14	0.26	0.71
		52	54	2	0.52	2.00

Hole No.	Final Depth (m)	From (m)	To (m)	Length (m)	Gold (g/t)	Silver (g/t)
WEH020	49	0	20	20	1.42	5.60
		22	26	4	1.10	9.00
		30	32	2	0.66	3.00
WEH021	72	0	16	16	0.91	3.88
	incl.	0	12	12	1.08	4.83
		18	22	4	0.48	7.00
		24	28	4	1.19	3.50
		40	68	28	0.53	2.86
WEH022	50	0	24	24	0.83	4.00
	incl.	10	12	2	1.08	12.00
	incl.	18	20	2	1.17	4.00
		30	50	20	0.50	2.70
WEH023	70	0	20	20	1.00	6.10
	incl.	0	4	4	1.51	10.60
	incl.	10	12	2	2.17	9.90
	incl.	14	16	2	1.03	4.20
		22	26	4	0.55	2.50
		32	44	12	0.70	0.70
	incl.	38	40	2	1.06	3.00
WEH024	78	0	4	4	0.97	5.00
	incl.	2	4	2	1.23	5.00
		8	18	10	0.85	6.34
	incl.	8	14	6	1.26	6.77
		20	48	28	0.62	4.43
	incl.	24	28	4	1.30	4.55
	incl.	38	40	2	1.45	4.90
WEH025	34	5	11	6	1.17	3.07
	incl.	5	9	4	1.55	4.05
WEH026	39	13	21	8	0.90	5.60
	incl.	13	15	2	1.31	4.30
		29	33	4	0.51	2.50
WEH027	84	10	16	6	0.68	10.00
		22	52	30	0.78	5.48
	incl.	26	30	4	1.90	7.35
		54	74	20	0.53	3.11
		78	84	6	0.47	2.40
WEH028	145.6	20	22	2	1.03	3.40
		46	48	2	0.64	2.40
		54	60	6	0.68	3.97
	incl.	58	60	2	1.49	7.00
		80	113.1	33.1	0.50	3.12

Hole No.	Final Depth (m)	From (m)	To (m)	Length (m)	Gold (g/t)	Silver (g/t)
WEH029	147.1	23	37	14	1.69	6.67
	incl.	23	31	8	2.34	5.95
	incl.	33	35	2	1.15	8.30
		41	51.1	10.1	0.70	5.44
	incl.	45.1	47.1	2	1.47	9.20
		85.1	93.1	8	0.32	2.50
		95.1	101.1	6	0.27	3.23
		119.1	127.1	8	0.27	2.93
		133.1	141.1	8	0.23	1.60
WEH030	59.5	2	59	57	1.21	6.47
	incl.	6	7	1	1.55	10.00
	incl.	8	10	2	2.03	15.00
	incl.	11	14	3	1.25	6.00
	incl.	16	18	2	1.57	9.50
	incl.	23	24	1	1.66	4.00
	incl.	25	26	1	5.48	29.00
	incl.	26	29	3	2.18	6.00
	incl.	30	31	1	1.01	4.00
	incl.	33	35	2	6.26	21.00
	incl.	35	37	2	1.11	6.50
	incl.	41	44	3	1.29	3.00
	incl.	45	47	2	1.18	3.00
	incl.	52	53	1	1.15	2.00
WEH031	64.8	1	4	3	1.72	4.33
	incl.	1	3	2	2.48	5.50
		7	31	24	3.19	6.96
	incl.	7	8	1	7.02	25.00
	incl.	13	16	3	2.97	4.67
	incl.	16	17	1	7.41	5.00
	incl.	17	19	2	17.10	12.00
	incl.	19	21	2	1.30	5.50
	incl.	22	27	5	2.00	6.00
		32	57	25	0.36	3.68
	incl.	50	51	1	1.30	5.00
WEH032	125.7	0	4.2	4.2	2.31	7.36
		7.5	13.2	5.7	2.00	7.59
	incl.	8.2	9.2	1	6.71	14.90
	incl.	9.2	11.2	2	1.70	7.30
		14.2	21.3	7.1	0.34	5.40
		29.3	32.3	3	0.29	2.67
		33.3	37.8	4.5	0.30	3.65
		39.8	43.8	4	0.32	3.65
		44.8	55.8	11	0.39	3.15

Hole No.	Final Depth (m)	From (m)	To (m)	Length (m)	Gold (g/t)	Silver (g/t)
WEH033	115.8	8	60	52	0.70	4.17
	incl.	8	10	2	2.36	6.10
	incl.	26	28	2	1.74	8.30
	incl.	30	32	2	1.29	4.20
WEH034	44.2	8	14	6	1.06	4.53
	incl.	12	14	2	2.59	14.00
WEH035	115.8	No significant intervals				
WEH036	100.7	No significant intervals				
WEH037	69.2	37.7	39.5	1.8	0.27	4.12
	incl.	37.7	37.8	0.1	1.27	31.60
WEH038	61.5	4.4	13.5	9.1	0.53	3.94
	incl.	6	7.5	6.1	1.22	5.00
		16	22.1	0.7	1.96	4.72
	incl.	17.1	17.8	1	2.90	6.80
	incl.	17.8	18.8	1.3	5.33	8.10
	incl.	18.8	20.1	10.5	2.67	4.90
		25.5	36	3	0.57	2.84
	incl.	27	30	4.5	1.17	3.50
		40.5	45	0	0.35	5.03
WEH039	100.6	5.7	14.7	9	2.06	6.91
	incl.	5.7	7	1.5	7.49	11.50
	incl.	7	8.5	1.5	3.52	9.20
		20.5	22	6.5	0.50	4.70
		35	41.5	9	0.31	3.32
		52	61	1.5	0.76	5.37
	incl.	55	56.5	1.5	1.32	7.90
	incl.	58	59.5	7.8	1.27	4.00
		67	74.8	12.4	0.70	2.85
		76.6	89	5.6	0.35	2.94
		95	100.6	0	0.30	1.69
WEH040	150.2	26.5	47.5	21	0.39	3.79
		83.5	88	4.5	0.26	3.50
WEH041	160.7	21	72.5	51.5	1.19	8.71
	incl.	27	28.6	1	14.15	44.40
	incl.	34.6	35.6	7.2	5.96	10.40
	incl.	46.1	53.3	10.1	1.75	15.47
		74.5	84.6	14	0.31	3.84
		122.6	136.6	16.9	0.33	3.20
		142.6	159.5	0	0.36	2.30
WEH042	150.1	11.6	12.2	0.6	0.95	3.90
		12.7	18.9	1.3	0.34	5.42
		20.9	22.2	33.4	0.58	7.30
		24.9	58.3	2	0.55	4.68
	incl.	43.6	45.6	1.7	1.88	11.80
		91.9	93.6	1.3	3.34	2.28
	incl.	92.3	93.6	6.9	4.06	2.30
		95.6	102.5	6.9	0.47	4.00

Hole No.	Final Depth (m)	From (m)	To (m)	Length (m)	Gold (g/t)	Silver (g/t)
WEH043	160.6	3.4	19	15.6	1.11	3.78
	incl.	3.4	7.4	4	1.03	3.45
	incl.	9.4	11.9	2.5	1.24	5.16
	incl.	13.9	17.9	4	1.80	3.85
		25	26.9	1.9	0.25	2.23
	incl.	26.8	26.9	0.1	1.18	4.50
		34.6	72	37.4	0.67	4.84
	incl.	59.2	61.3	2.1	2.77	5.80
	incl.	65.4	67.4	2	1.29	12.50
		85.7	91.7	6	0.31	2.17
		119.4	120.1	0.7	0.51	22.90

TABLE 2

TRENCHING ASSAY RESULTS - WEIOKO PROSPECT

Trench No	Total Trench Length (m)	Intervals greater than 0.5g/t gold	Gold Grade (g/t)
1	28 incl.	22 4	6.44 24.41
2	28	4 2 2	1.78 1.39 3.74
3	22	2 4 2	1.39 7.01 4.42
4	28	6 4	3.77 4.11
5	28	2	1.14
6 & 7	114	2 6	7.28 2.41
10	20	2 2 8	133 1.45 5.31
11 & 12	86	6 2 4 2 2 4	2.59 2.40 2.40 1.11 1.47 2.04
13	14	10	1.30
14	32	6 6 8	3.33 1.12 14.68
15	20	2	1.04
16	14	2	1.44
Main Trench	176 incl. plus	164* 8 8 20 12 20 44 4 4	3.96 1.36 3.68 2.10 5.02 4.44 8.69 58.87 1.12
North Trench	-	72	2.34

1. No trench No 8 excavated /sampled
2. All samples collected using a diamond saw to cut channels except North Trench which was hand channel sampled
3. Trench locations shown on plan on web site

The geochemistry results and IP surveys coincide in several areas which is regarded as favourable for the occurrence of gold mineralisation similar to the drilled mineralisation at Weioko. These targets will be scheduled for drill testing later in 2009 or in 2010.

To summarise:

- Gold mineralisation has been defined in approximately 50 drill holes at Weioko over an area of 300m by 120m to a depth of 70m. Mineralisation commences at surface and is also defined in trenches.
- This mineralisation will be further defined in the current program and the total drill holes should be sufficient for a resource to be estimated in accordance with the guidelines of NI 43-101 later this year.
- Only a small part of the potentially gold mineralised area has been drill tested and, after consideration of soil geochemistry, rock chip and IP results, it can be concluded that there is a high probability that additional gold mineralisation will be defined within the 12 sq km gold anomalous area.

RC samples were partly prepared at site by splitting to approximately 3 kgs. Further preparation and analysis was completed at accredited laboratory, ALS-Chemex laboratories, in Townsville, Queensland, Australia.

Drill core was logged and split (all by saw) on site with half core being dispatched to, and assayed by accredited laboratory ALS-Chemex in Townsville, Australia. Trench samples are continuous channel samples, in either one or two metre intersects. Usually about 3kg is collected and prepared and assayed at ALS-Chemex in Townsville, Australia.

The information in this release was prepared under the direction of Robert D. McNeil a Fellow of the Australia Institute of Mines and Metallurgy and a "qualified person" as defined by National Instrument 43-101. Mr McNeil has read and approves the information contained herein.

Full details of the Sinivit Project are described in an Independent NI 43-101 report dated January 2006 which is available at www.newguineagold.ca.

For further information on this release or on other NGG projects such as the Sinivit Gold Mine, contact Forbes West toll free at 888 655 5532, email forbes@sherbournegroup.ca or Judith O'Quinn at 604 662 3598, email ngg@telus.net or access our website - www.newguineagold.ca

ON BEHALF OF THE BOARD

R.D. McNeil

CHAIRMAN & CEO

The TSX Venture Exchange has not reviewed and does not accept the responsibility of the adequacy of this release. The statements made in this News Release may contain certain forward-looking statements. Actual events or results may differ from the Company's expectations. Certain risk factors may also affect the actual results achieved by the Company.

Kc/rdm011.09