

**Canada:**

900 – 595 Howe Street
Vancouver, B.C., Canada, V6C2T5
Phone: +1 604.689.1515, ext 103
Fax: +1 604.687.8678
Email: ba@primarycapital.net

Australia:

P.O. Box 7996
Gold Coast Mail Centre, Qld 9726
Phone: +61 (7)5592.2274
Fax: +61 (7)5592.2275
Email: info@newguineagold.ca

Investor Relations

Forbes West
Email: forbes@sherbournegroup.ca

Trading Symbols: TSX-V: **NGG**
Frankfurt: **NG8**
Web Site: www.newguineagold.ca

PRESS RELEASE

New Guinea Gold Corporation Announces that Gold Anomaly is to Commence Drilling at Crater Mountain, Papua New Guinea

Vancouver BC 19 November, 2010. Gold Anomaly Ltd, an Australian Securities listed Company (GOA), operator of the Crater Mountain Joint Venture, announced on November 11, 2010 that they had raised funds and planned to commence drilling on November 21, 2010.

In respect to the drilling program, GOA summarised:

- **Focus on proving the geological model of diatreme-breccia hosted mineralisation indicated by two separate zones of mineralisation**
- **Drilling to test the geological model of a potential sub-vertical diatreme-breccia zone situated between the two zones of mineralisation defined by previous drilling and sampling.**
- **This zone has never been drilled as the two zones of mineralisation were previously thought unrelated.**
- **The diatreme and related breccias have been altered and mineralised by both mineralisation events.**

Maurice Gannon President of New Guinea Gold commented: “*NGG holds a 10% free carried interest to Bankable Feasibility in the Crater Mt Project. NGG and GOA have recently signed a Letter of Intent whereby GOA will acquire the above interest in exchange for 31,250,000 GOA shares.*”

The Crater Mt system is a large gold system and the above shares will give NGG greater flexibility in obtaining value for its interest in the project”.

The information contained in this news release relating to exploration results at Gold Anomaly’s Crater Mountain project is based on information compiled by Mr Robert McLean, Director of Gold Anomaly Limited. Mr McLean is a Member of the Australasian Institute of Mining and Metallurgy and has the relevant experience in relation to the mineralisation being reported upon to qualify as a “Qualified Person” as defined by the National Instrument 43-101. Mr McLean has read and consents to the inclusion of information contained herein.

For further information on this release or on other NGG projects, contact Forbes West toll free at (888)6555532, email forbes@sherbournegroup.ca, info@newguineagold.ca, or access our website – www.newguineagold.ca.

ON BEHALF OF THE BOARD

M Gannon
PRESIDENT

Neither TSX Venture Exchange nor its Regulation Services Provider (as that term is defined in the policies of the TSX Venture Exchange) accepts responsibility for the adequacy or accuracy of this release.

Forward Looking Statements - Certain information set forth in this news release may contain forward-looking statements that involve substantial known and unknown risks and uncertainties. These forward-looking statements are subject to numerous risks and uncertainties, certain of which are beyond the control of NGG, including, but not limited to the impact of general economic conditions, industry conditions, volatility of commodity prices, risks associated with the uncertainty of resource and reserve estimates, currency fluctuations, dependence upon regulatory approvals, the availability of future financing and exploration risk. Readers are cautioned that the assumptions used in the preparation of such information, although considered reasonable at the time of preparation, may prove to be imprecise and, as such, undue reliance should not be placed on forward-looking statements.

Gold Anomaly's release follows:

- **Recent funds raised to expand maiden drilling program at potential world class gold asset**
- **Focus on proving the geological model of diatreme-breccia hosted mineralisation indicated by two separate zones of mineralisation**
- **Drilling to test the geological model of a potential sub-vertical diatreme-breccia zone situated between the two zones of mineralisation defined by previous drilling and sampling.**
- **This zone has never been drilled as the two zones of mineralisation were previously thought unrelated.**
- **The diatreme and related breccias have been altered and mineralised by both mineralisation events.**

Maiden drilling by GOA commencing late November

Gold Anomaly Limited (ASX: GOA) is pleased to announce that the company's maiden drilling program at the potentially world class Crater Mountain gold project is on track to commence on 21st November 2010.

Following yesterday's \$2.3 million capital raising, the drilling program has been expanded from 1,500 metres to 2,500 metres. The program will target the most advanced of the four gold bearing areas identified to date, the Nevera prospect.

Drilling at Nevera will focus on proving the geological model of **diatreme-breccia hosted mineralisation indicated by two separate zones of mineralisation** defined by previous drilling namely the Eastern "Main Mineralized Zone" and Western "Artisanal Mining Zone". The drill intercepts to date in each zone are as follows;

East "Main Mineralized Zone":

NEV 02:	121 metres at 1.77 g/t Au
NEV 05:	151 metres at 1.38 g/t Au
NEV 08:	178 metres at 1.30 g/t Au
NEV 10:	129 metres at 0.61 g/t Au
NEV 11:	205 metres at 0.86 g/t Au

West "Artisanal Mining Zone"

NEV 04:	106 metres at 0.50 g/t Au
NEV 09:	18 metres at 1.94 g/t Au

The drilling programme is being led by director and exploration manager Peter Macnab, who has played a key role in the discovery of major mineral deposits totalling some 100Moz gold equivalent throughout PNG over the past four decades. Mr Macnab's view is that **the diatreme-breccia zone outlined** at Nevera is analogous to the diatreme hosted geological setting at the 6.5Moz Wafi Creek (Newcrest/ Harmony Gold), which Peter discovered. In addition, Crater Mountain displays similar geological settings to both Kelian [Indonesia] and Acupan [Philippines], both of which host orebodies in excess of 1Moz gold.

Previous work has indicated Nevera is a huge alteration system with evidence of a porphyry deposit at depth. By contrast to Wafi Creek and other similar deposits in PNG, there has been much less drilling at Nevera and many anomalous zones, both at Nevera and other prospects at Crater Mountain, remain to be tested.

The Nevera complex outcrops at the end of a ridge approximately 400 metres above the drainages to the east and west. The topography could facilitate either large scale open cut or high-grade underground mining.

About Crater Mountain

Previous Exploration

Gold mineralisation at Nevera occurs in a volcanic complex outcropping over approximately one square kilometre. Two phases of gold mineralisation have been identified by petrological studies;

1] an early event characterized by quartz-pyrite veining and related to alteration by a predominantly magmatic fluid; and

2] a later carbonate base metal event related to mixing of hydrothermal fluid with low pH carbon dioxide rich meteoric waters.

The area has previously been explored by Esso/ City Resources, Macmin Mining, Triple Plate Junction and BHP Exploration who drilled the first three holes at Nevera aimed at a buried porphyry copper target. BHP's plans to extend the drilling were curtailed by the company's withdrawal from all projects in Papua New Guinea in 1997.

Sixteen holes have been drilled at Nevera to date and all have intersected gold mineralisation. Nevera is interpreted to be the top of a large Au-Ag-Cu-Pb-Zn hydrothermal mineralizing system but the 16 holes drilled to date are insufficient to have delineated the extent and geometry of the mineralisation. Surface exploration has been hindered by the presence of a thin [0-10m] cover of more recent volcanic ash.

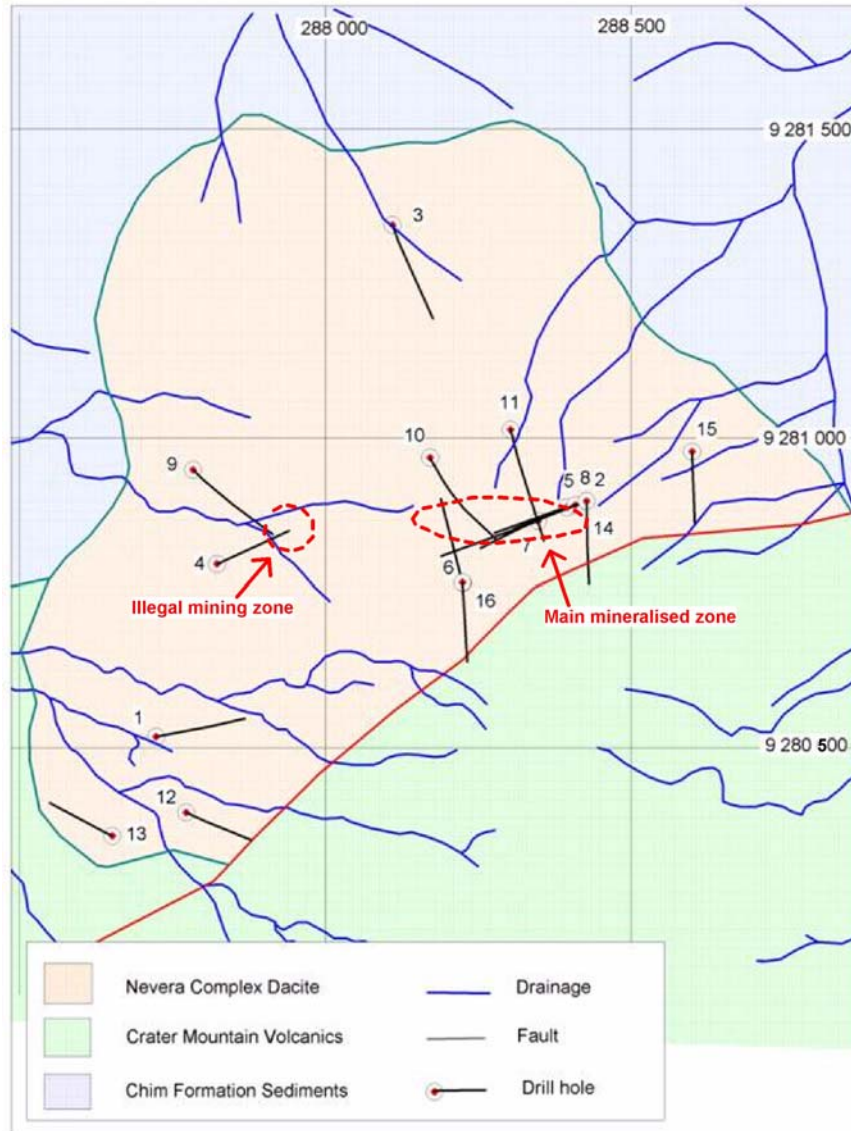


Figure 1. Drill hole locations and main mineralised zones at the Nevera Prospect
 Two zones of more extensive gold mineralisation referred to as the “main mineralised zone” and the “illegal or Artisanal mining zone” have been outlined.

Work conducted by the Company has refined the geological model for Nevera and outlined a potential sub-vertical diatreme-breccia zone situated between the two zones of mineralisation defined by previous drilling and sampling. This zone has never been drilled as the two zones of mineralisation were thought unrelated. The diatreme and related breccias have been altered and mineralised by both mineralisation events.

The diatreme model proposes a diatreme breccia was emplaced along the contact between the early porphyry intrusion and country rock sediments. The diatreme was also intruded along the more flat-lying basement contact with overlying volcanics where it has been intersected by drilling in the main zone of mineralisation. The high grade supergene gold mineralisation in the illegal mining zone has been remobilized from the mineralised diatreme-breccia zone.

The Company considers that the diatreme-breccia zone outlined at Nevera is analogous to Wafi Creek which has diatreme hosted geological setting and contains 6.5 million ounces of gold.

Previous work has indicated Nevera is a huge alteration system with evidence of a porphyry deposit at depth. By contrast to Wafi Creek and other similar deposits in PNG there has been much less drilling at Nevera and many anomalous zones, both at Nevera and other prospects at Crater Mountain, remain to be tested.

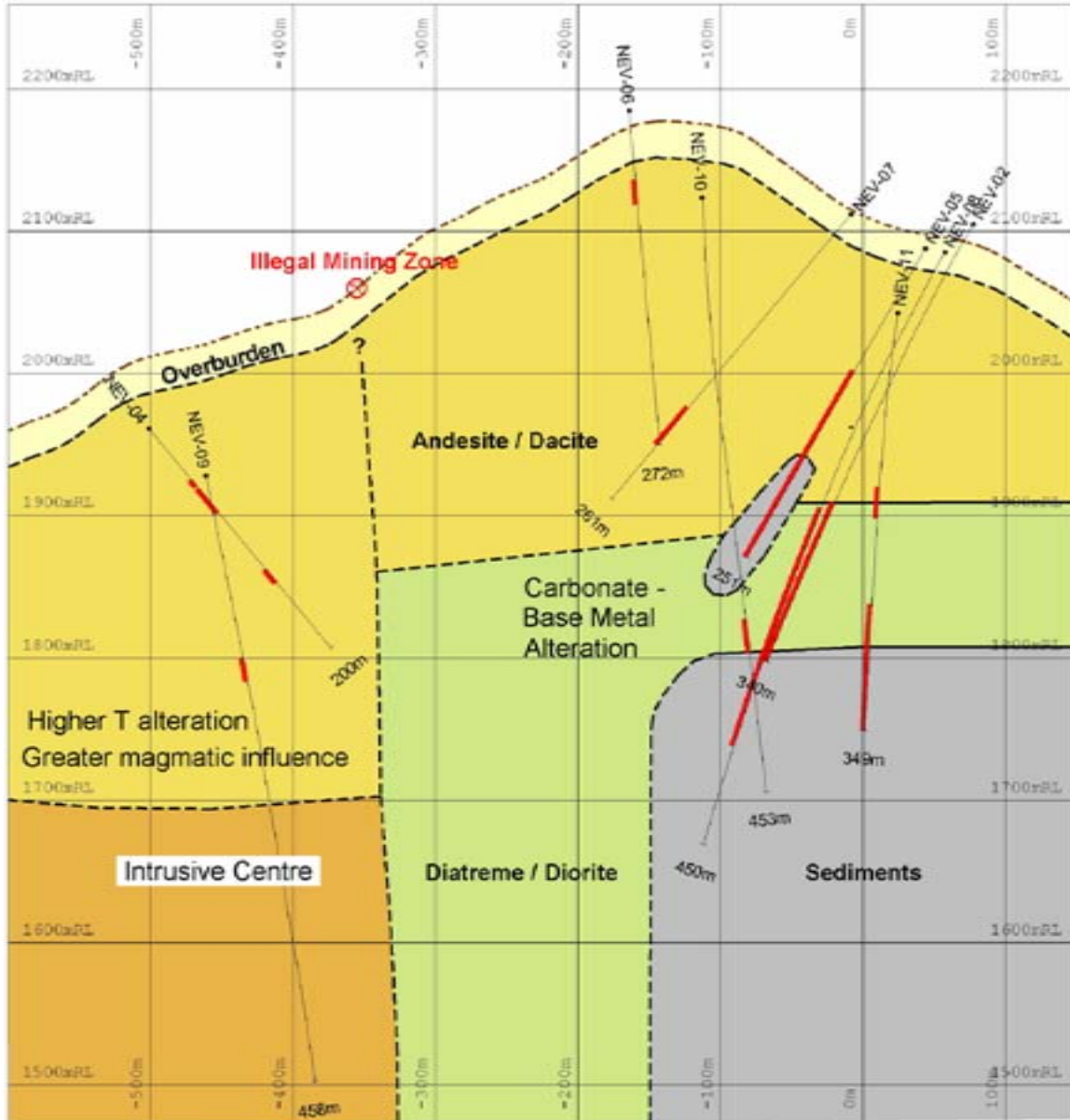


Figure 2. ENE orientated section through the Nevera Complex showing the geological interpretation based on Gold Anomaly's computer modelling. Holes Nev 4 and 9 and the illegal mining zone overlay the original Nevera intrusive centre and are characterized by alteration by a more magmatic fluid. The "main mineralised zone" occurs above relatively flat lying basement 300 metres further to the east and is characterized by two stages of mineralisation including the later carbonate base metal alteration event. A mineralised sub-vertical diatreme is interpreted to have been erupted along the margin of the intrusive centre between the two areas of mineralisation and be contiguous with the diatreme in the "main mineralised zone". **The sub-vertical diatreme zone has not been drill tested but can be expected to have been mineralised by both mineralisation events and to have grades similar to or greater than the diatreme-diorite-breccia zone intersected by drilling overlying the flat-lying basement contact. The diatreme may extend much closer to the surface than shown in the diagram.**

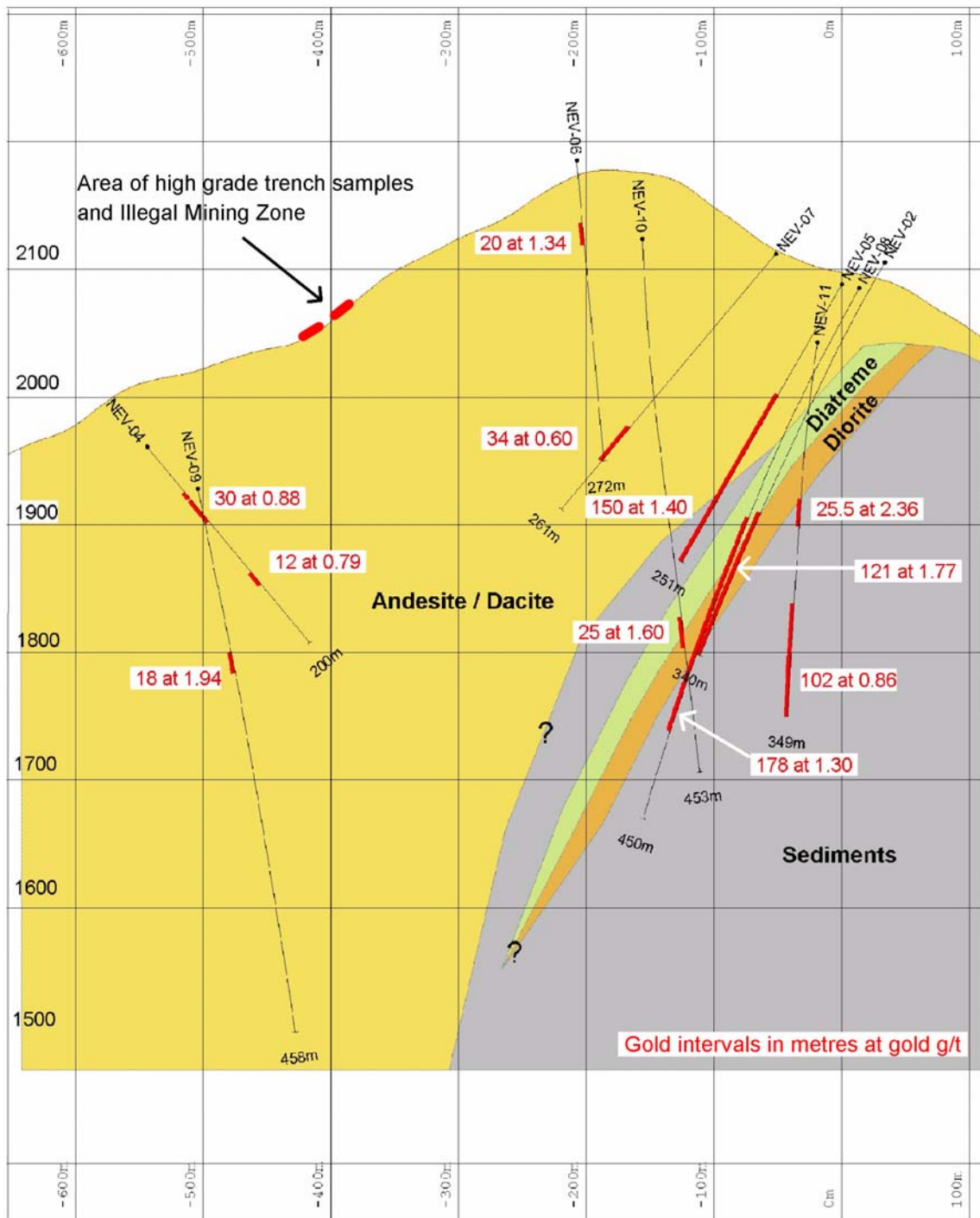


Figure 3. East-West section through the Nevera Complex showing main gold intersections in both mineralised zones and the illegal mining zone.

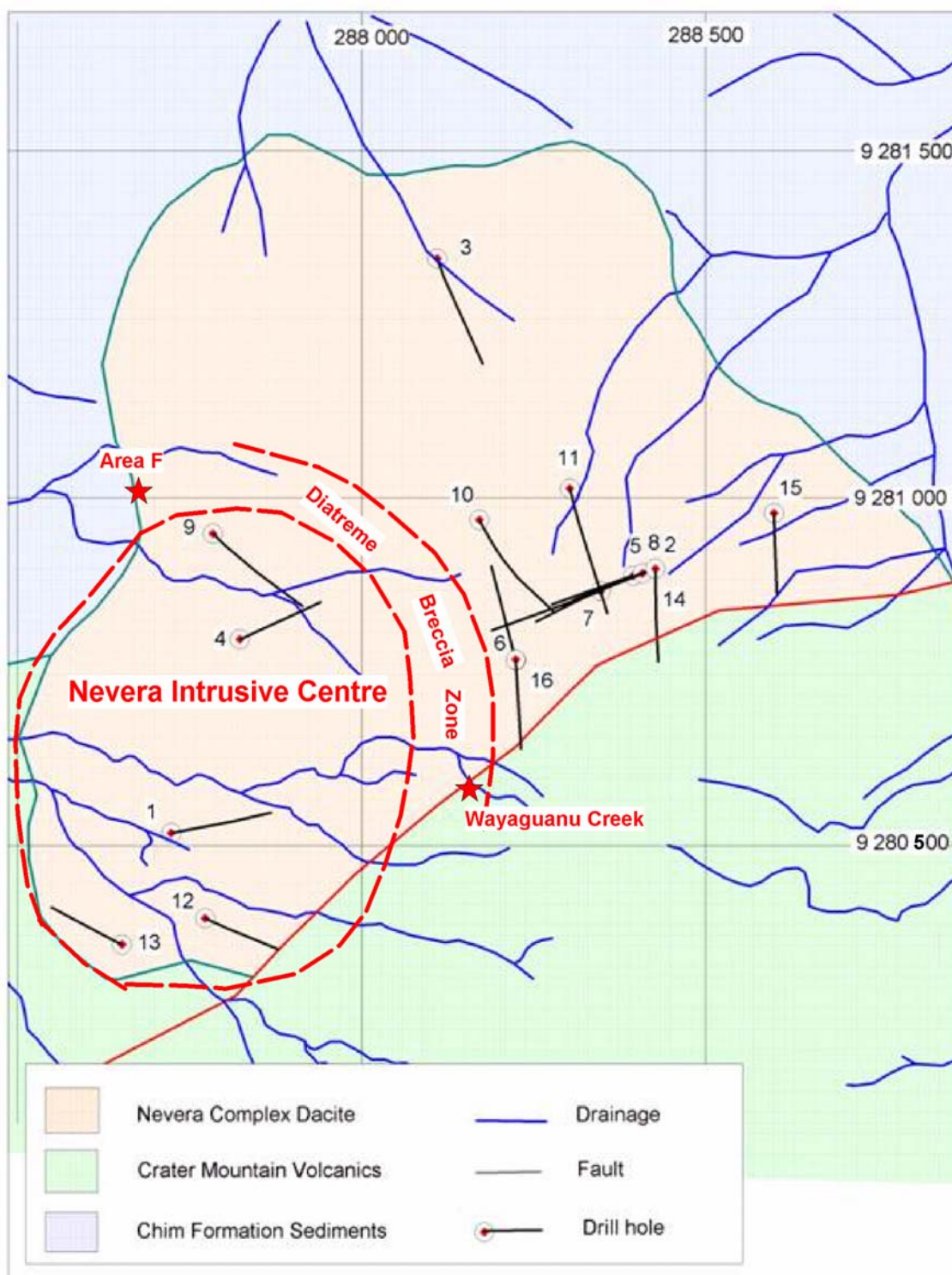


Figure 4. Plan view of the Nevera Intrusive Centre and target diatreme breccia zone

Target Mineralisation

The mineralisation in holes 2, 5, 6, 7, 8, 10 and 11 is characterized by carbonate base metal alteration with the base metal mineralisation associated with a zone of diorite, diatreme and breccia above the volcanic-sediment contact. This sequence is up to 100 metres thick and commonly contains bands of

sediment [in holes 2, 8 and 5] which attests to significant disruptions at this location. The mineralisation is interpreted to be hosted in a diatreme emplaced along the contact of the intrusive centre and country rock which is a typical host for mineralisation in similar geological settings. Mineralisation in these holes has evidence of both phases of mineralisation thus leading to higher grades and more extensive zones of mineralisation.

The presence of a steeply dipping contact between the intrusive centre and the sediment basement is indicated by the drill data. The diatreme, diorite and mineralisation above the contact in the main mineralised zone must be contiguous with a sub vertical diatreme emplaced along the intrusive contact between the intrusive centre and sediment basement

Holes Nev 4 and Nev 9 have no evidence of carbonate base metal mineralisation and thus have not intersected the potentially 200+ metre wide sub-vertical diatreme zone along the sediment contact which must be present between holes 9 and 2. Holes 4 and 9 have not fully tested the illegal mining zone and the origin of the high grade gold in this area is still unclear. The presence of a sub vertical mineralised diatreme-diorite intrusive adjacent to the illegal mining zone would provide a source for the supergene gold recovered from the area.

A breccia/diatreme zone along the margin of the intrusive is interpreted to trend north between holes 2 and 9. The zone may extend northwest towards Area F and south towards the Wayaguanu Creek area as shown in Figure 4. Both areas have been shown to be significantly anomalous in regional sampling with Wayaguanu Creek in particular returning samples with high grades of Au [2m at 12.20 g/t Au] associated with significant Ag-Pb-Zn as well as copper [up to 1.10%].

CONCLUSION

Work conducted by Gold Anomaly has refined the geological model for Nevera and outlined a potential sub-vertical mineralized diatreme-breccia zone situated between the two zones of mineralisation intersected by previous drilling and sampling.

The model proposes a diatreme breccia was emplaced along the contact between the early porphyry intrusion and country rock sediments. The diatreme was also intruded along the more flat-lying basement contact with overlying volcanics where it has been intersected by drilling in the main zone of mineralisation. The high grade supergene gold mineralisation in the illegal mining zone has been remobilized from the mineralised diatreme-breccia zone.

Previous work has indicated Nevera is a huge alteration system with evidence of a porphyry deposit at depth. By contrast to Wafi Creek and other similar deposits in PNG there has been much less drilling at Nevera and many anomalous zones, both at Nevera and other prospects at Crater Mountain, remain to be tested.

ABOUT GOLD ANOMALY

Gold Anomaly (GOA) is an ASX-listed junior company focussed on exploration and pre-development projects in Papua New Guinea. Based on the results to date (see details above) and the experience of Peter Macnab, Gold Anomaly's Director of Exploration, the company's flagship project is the Crater Mountain gold project which has the potential to become a significant gold deposit.

The Company is also focussed on the commencement of gold mining activities at the high grade gold project at Sao Chico in Brazil. It is also progressing its Fergusson Island gold project in Papua New Guinea and seeking a joint venture partner for its encouraging vein style polymetallic discovery (zinc tin-copper-silver dominant) at Croydon in North Queensland

For further information regarding Gold Anomaly please contact:

Ken Chapple or	Greg Starr
Executive Director	Executive Chairman
Mb +61 (0) 418 758 301	+61 2 9241 4224

Or visit the GOA website www.goldanomaly.com.au

The information contained in this report relating to exploration results at Gold Anomaly's Crater Mountain project is based on information compiled by Mr Robert McLean, Director of Gold Anomaly Limited. Mr McLean is a Member of the Australasian Institute of Mining and Metallurgy and has the relevant experience in relation to the mineralisation being reported upon to qualify as a Competent Person as defined in the 2004 Edition of the Australasian Code for Reporting of Exploration Results, Mineral Resources and Ore Reserves. Mr McLean consents to the inclusion in the report of the matters based on his information in the form and context in which it appears.