



**Canada:**

900 – 595 Howe Street  
 Vancouver, B.C., Canada, V6C2T5  
 Phone: +1 604.689.1515, ext 103  
 Fax: +1 604.687.8678  
 Email: ba@primarycapital.net

**Australia:**

P.O. Box 7996  
 Gold Coast Mail Centre, Qld 9726  
 Phone: +61(7)5592.2274  
 Fax: +61(7)5592.2275  
 Email: info@newguineagold.ca

**Investor Relations**

Forbes West  
 Email: forbes@sherbournegroup.ca

Trading Symbols: TSX-V: **NGG**  
 Frankfurt: **NG8**  
 Web Site: www.newguineagold.ca

**PRESS RELEASE**

**New Guinea Gold Corporation/NMC Mining Corp Joint Venture Reports  
 Widespread Gold in Rock at Kela’s Prospect, Northwest of Imwauna  
 Project, Papua New Guinea**

**Vancouver, October 19, 2010.** New Guinea Gold Corporation (“NGG” or the “Company”), (NGG:TSX-V) on behalf of the NMC/NGG Joint Venture, carried out extensive surface rock chip sampling in the Kela’s area to the northwest and north of the Imwauna gold resource (see accompanying figure) showing anomalous gold in soils and the location of Imwauna.

This sampling, which is expected to be the pre-cursor for excavator trenching and drill testing returned many significant results – 20% of all samples were greater than 4g/t gold and 42% were greater than 1g/t gold. These results are encouraging and confirm that other parts of the general Imwauna area could contain significant gold resources.

All sample results are given in the table below to illustrate the large number of significant results.

**Rock Sample Assays**

<b>Sample No</b>	<b>Prospect</b>	<b>Northing (m)</b>	<b>Easting (m)</b>	<b>Sample Type</b>	<b>Gold (g/t)</b>	<b>Silver (g/t)</b>
86280	Cnt.Kelas	8887990	289122	Spot	10.9	53
86281	Cnt.Kelas	8888002	289143	Spot	0.013	<5
86282	Cnt.Kelas	8888046	288821	Spot	0.039	<5
86283	Cnt.Kelas	8888054	288803	Spot	0.18	<5
86284	Cnt.Kelas	8888042	288690	Spot	0.017	<5
86285	Cnt.Kelas	8888028	288684	Spot	0.019	<5
86286	Cnt.Kelas	8887990	288673	Spot	0.016	17
86287	Cnt.Kelas	8887831	288558	1m vert.Chip	9.39	13
86288	Cnt.Kelas	8887831	288558	40cm - x	4.53	<5
86289	Sth.Kelas			Grab	0.021	<5
86290	Sth.Kelas			1cm Chip	0.295	<5
86291	Sth.Kelas			Grab	<0.005	<5
86292	Sth.Kelas			Grab	<0.005	<5
86293	Cnt.Kelas			Grab	0.681	<5
86294	Cnt.Kelas	8888078	288858	Spot	<0.005	<5
86295	Cnt.Kelas	8888092	288843	1m Chip	0.028	<5
86296	Cnt.Kelas	8888089	288861	Spot	<0.005	<5
86297	Cnt.Kelas	8888083	288864	1m Vert Chip	0.314	<5
86298	Cnt.Kelas	8888083	288864	70cm Chip	0.281	<5

86299	Cnt.Kelas	8888108	288874	Spot	4.69	5
86300	Cnt.Kelas	8888141	288886	Spot	.12	13
86301	Cnt.Kelas	8888147	288887	Spot	0.532	<5
86302	Cnt.Kelas	8888167	288896	Spot	0.286	<5
86303	Cnt.Kelas	8888174	288869	Spot	0.127	<5
86304	Cnt.Kelas	8888199	288908	Spot	19.2	5
86305	Cnt.Kelas	8888199	288908	Spot	0.008	<5
86306	Cnt.Kelas	8887978	288577	3m Chip	0.016	<5
86307	Cnt.Kelas	8887980	288574	Spot	0.015	<5
86308	Cnt.Kelas	8887945	288601	Spot	9.18	10
86309	Cnt.Kelas	8887909	288556	Spot	1.84	<5
86310	Cnt.Kelas	8887917	288553	Spot	0.469	<5
86311	Cnt.Kelas	8887918	288588	Spot	7.59	9
86312	Cnt.Kelas	8887884	288598	70cm Chip	4.36	12
86313	Cnt.Kelas	8887882	288598	1m Vert Chip	7.94	17
86314	Cnt.Kelas	8887882	288598	Spot	3.05	10
86420	Sth.Kelas	8886770	288422	Spot	0.337	1.4
86421	Sth.Kelas	8886770	288422	Spot	0.554	4.3
86422	Sth.Kelas	8886770	288422	1m Chip	0.414	1.2
86423	Sth.Kelas	8886837	288441	1m Chip	0.974	1.3
86424	Sth.Kelas	8886815	288436	Spot	0.23	1.3
86425	Sth.Kelas	8886815	288436	Spot	0.677	1.3
86426	Sth.Kelas	8887148	288478	3m Chip	0.734	0.3
86427	Sth.Kelas	8888141	288035	3m Chip	0.092	0.8
86428	Sth.Kelas	8887250	288503	Spot	0.62	3.6
86429	Sth.Kelas	8887286	288490	2.80 Chip	1.62	1.3
86430	Sth.Kelas	8887286	288490	2.80 Chip	1.04	1.9
86431	Sth.Kelas	8887286	288490	2.80 Chip	1.27	0.9
86432	Sth.Kelas	8887312	288540	Spot	1.45	2.3
86433	Sth.Kelas	8887336	288532	Spot	0.338	1.2
86434	Sth.Kelas	8887366	288550	110cm Chip	0.648	1.1
86435	Sth.Kelas	8887447	288485	Spot	0.91	2.4
86436	Sth.Kelas	8887468	288313	Spot	1.3	6.4
86437	Cnt.Kelas	8887514	288395	Spot	<0.005	<0.1
86438	Cnt.Kelas	8887575	288358	8.5m Chip	1.24	3.7
86439	Cnt.Kelas	8887617	288363	Spot	1.97	17.6
86440	Cnt.Kelas	8887598	288420	Spot	3.19	7.9
86441	Cnt.Kelas	8887648	288421	Spot	5.18	31.5
86442	Cnt.Kelas	8887495	288588	Spot	2.08	3.4
86443	Cnt.Kelas	8887489	288604	Spot	2.11	2.4
86444	Cnt.Kelas	8887477	288588	130cm Chip	0.094	0.2
86445	Cnt.Kelas	8887438	288554	3m Chip	0.413	3.3
86446	Cnt.Kelas	8887816	288523	Spot	5.74	6.7
86447	Cnt.Kelas	8887830	288532	Spot	9.28	16.2
86448	Cnt.Kelas	8887885	288643	1.90 Chip	3.51	3.3
86449	Cnt.Kelas	8887885	288643	1.90 Chip	0.079	0.1
86450	Cnt.Kelas	8887885	288643	1.90 Chip	0.855	0.3
86451	Cnt.Kelas	8887978	288530	Spot	0.844	0.3
86452	Cnt.Kelas	8887986	288540	Spot	2.39	1.9
86453	Nth Kelas	8888172	289117	Spot	4.37	3.5
86454	Nth Kelas	8888182	289116	Spot	2.64	11.3
86455	Nth Kelas	8888227	289214	Spot	0.29	0.4
86456	Nth Kelas	8888211	289166	Spot	7.45	12.3
86457	Nth Kelas	8888291	288935	3.6 Chip	0.064	0.1
86458	Nth Kelas	8888306	289065	Spot	1.38	3.4

**Note:** Cnt - Central  
Sth - South  
Nth - North  
Spot - Single Sample of Outcrop  
Chip - Chip Sample across Outcrop (2 to 3 kilos)

All samples are prepared in Lae PNG by Intertek Ltd and analysed at accredited laboratory Intertek Ltd, Jakarta, Indonesia.

The Imwauna Project is beneficially held 50% by NGG and 50% by NMC. NMC may earn a further 50% of the project by spending on exploration a further \$7,550,000 before June 22, 2013. NMC must spend approximately \$2 million before June 22, 2011. NMC plans to re-commence drill testing in mid November 2010.

NMC holds approximately 27 million shares and warrants in NGG and NGG in turn holds 15,682,269 shares in NMC. The latter shareholding represents approximately 31% of the issued shares in NMC.

The information in this release was prepared under the direction of Robert D. McNeil a Fellow of the Australasian Institute of Mining and Metallurgy and a “qualified person” as defined by National Instrument (“NI”) 43-101. Mr McNeil has read and approves the information contained herein.

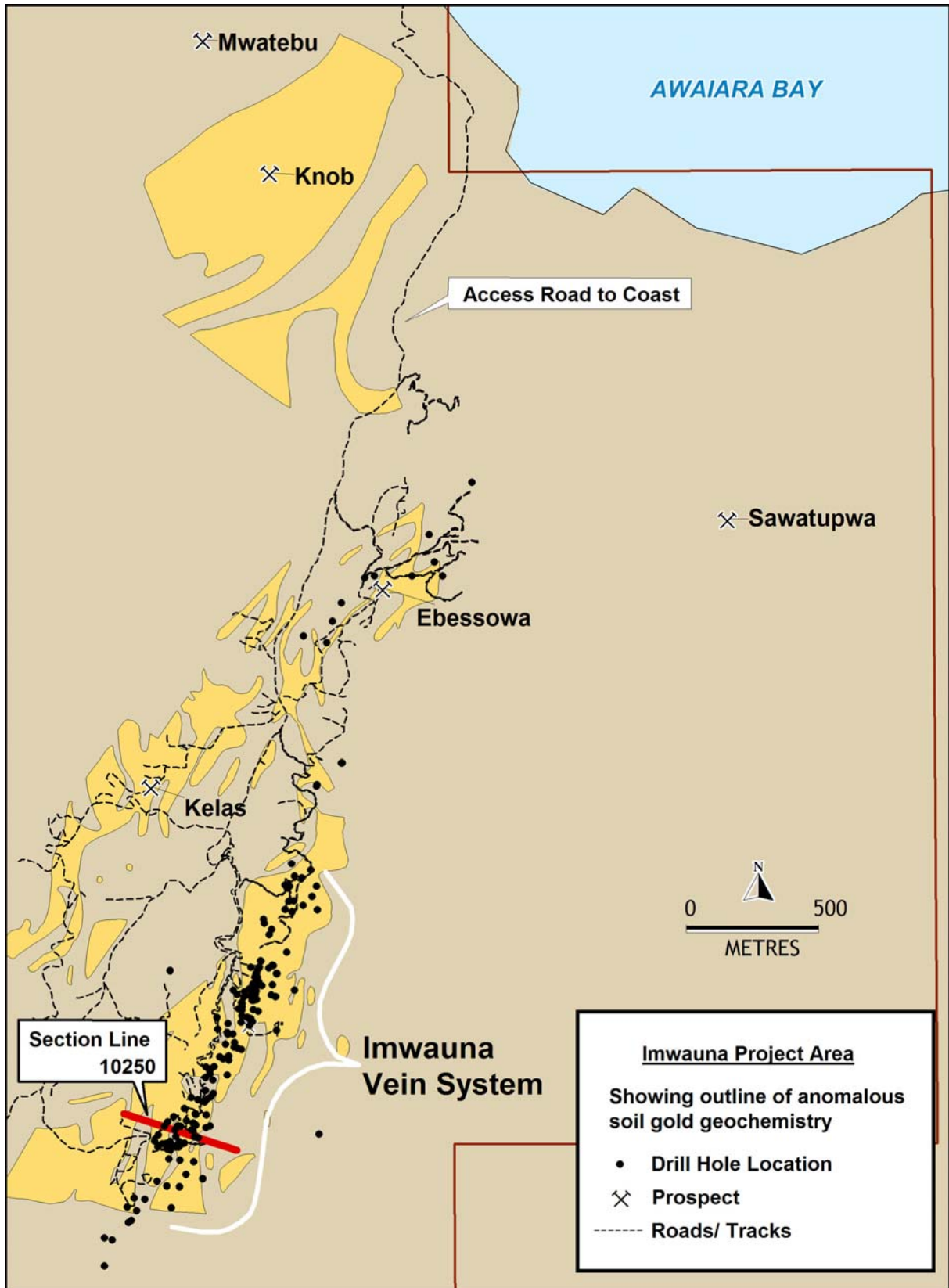
For further information on this release or on other NGG projects, contact Forbes West toll free at (888)6555532, email [forbes@sherbournegroup.ca](mailto:forbes@sherbournegroup.ca), [info@newguineagold.ca](mailto:info@newguineagold.ca), or access our website – [www.newguineagold.ca](http://www.newguineagold.ca).

## **ON BEHALF OF THE BOARD**

### **R.D.McNeil CHAIRMAN & CEO**

Neither TSX Venture Exchange nor its Regulation Services Provider (as that term is defined in the policies of the TSX Venture Exchange) accepts responsibility for the adequacy or accuracy of this release.

Forward Looking Statements - Certain information set forth in this news release may contain forward-looking statements that involve substantial known and unknown risks and uncertainties. These forward-looking statements are subject to numerous risks and uncertainties, certain of which are beyond the control of NGG, including, but not limited to the impact of general economic conditions, industry conditions, volatility of commodity prices, risks associated with the uncertainty of resource and reserve estimates, currency fluctuations, dependence upon regulatory approvals, the availability of future financing and exploration risk. Readers are cautioned that the assumptions used in the preparation of such information, although considered reasonable at the time of preparation, may prove to be imprecise and, as such, undue reliance should not be placed on forward-looking statements.



Anomalous gold in soils indicates overall size of Imwauna Project