



**Canada:**  
 900 – 595 Howe Street  
 Vancouver, B.C., Canada, V6C2T5  
 Phone: +1 604.689.1515, ext 103  
 Fax: +1 604.687.8678  
 Email: ba@primarycapital.net

**Australia:**  
 P.O. Box 7996  
 Gold Coast Mail Centre, Qld 9726  
 Phone: +61(7)5592.2274  
 Fax: +61(7)5592.2275  
 Email: info@newguineagold.ca

TSX-V: **NGG**  
 Frankfurt: **NG8**  
[www.newguineagold.ca](http://www.newguineagold.ca)

**FOR IMMEDIATE RELEASE**

**New Guinea Gold Announcement**

**8m at 5.67 Gold Intersected Approximately 1km South  
 of Sinivit Mine at Mengmut, Papua New Guinea**

**Vancouver, BC – June 29, 2011 – New Guinea Gold Corporation** (“NGG” or the “Company”) announces that two reverse circulation holes at Mengmut, Papua New Guinea, south of the Sinivit Mine along the Sinivit structure, both intersected significant gold and copper (for location please see Figure 1 below and our press release dated May 3, 2011). Hole MRC01 intersected 12m at 2.39g/t gold and 0.3% copper, and Hole MRC02 intersected 14m gold at 3.80g/t and 0.1% copper. Complete results are given in the table below:

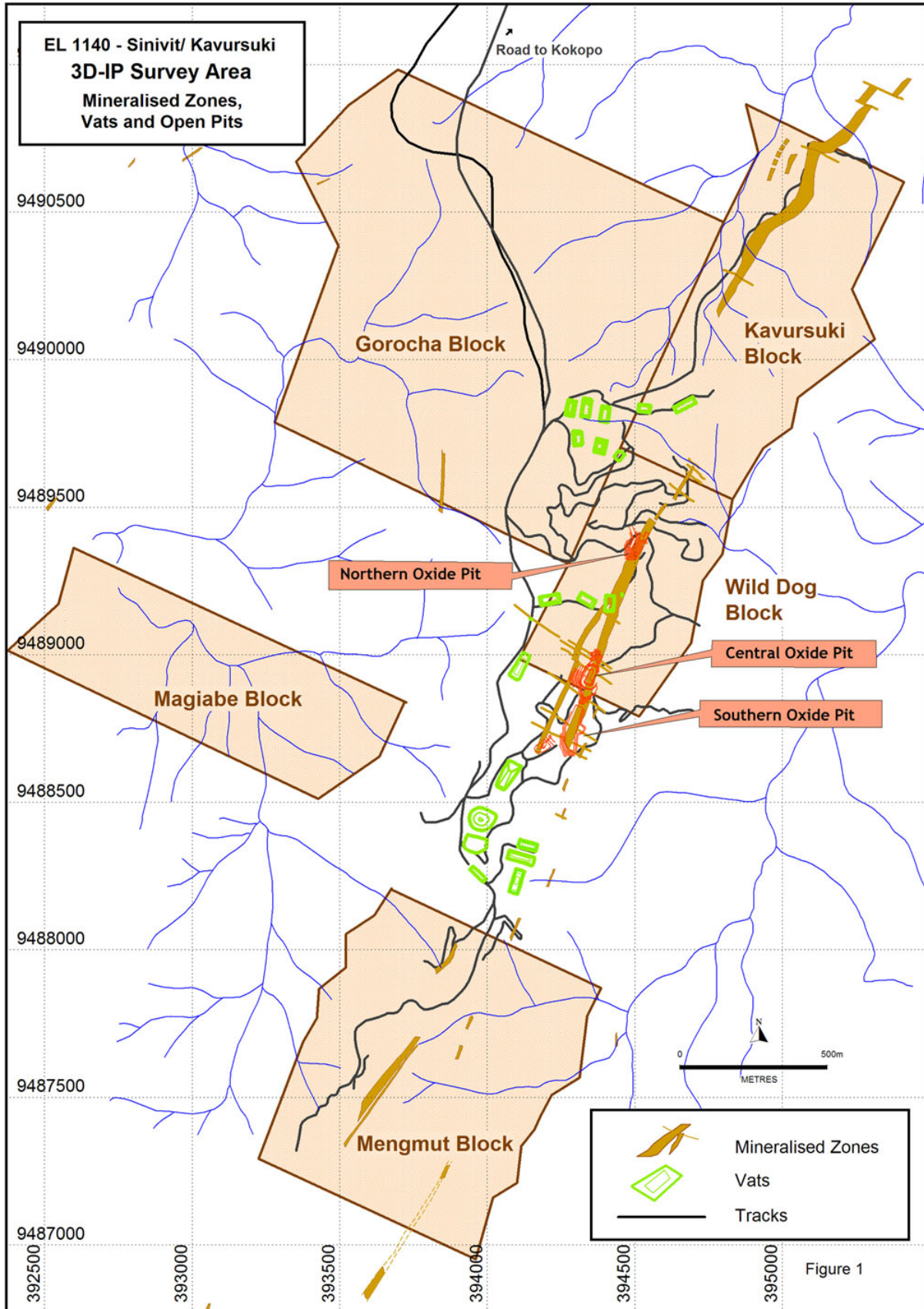
Hole No	From (m)	To (m)	Length (m)	Gold (g/t)	Copper (ppm)	Inclination (degrees)	Depth (m)
MRC01	2	4	2	12.95	131	90	20
	8	20	12	2.39	3000		
including	14	20	6	3.07	5650		
MRC02	0	14	14	3.80	1044	90	30
	6	14	8	5.67	1225		
including	16	18	2	0.66	1755		

Note: 1. Cut offs used was 0.5g/t gold  
 2. True thickness not known  
 3. Collar so-ordinates are at approximately 9847500N, 393400E (see Figure 4 below). The holes are approximately 20m apart along strike

Results from two further holes are pending.

Bob McNeil, consultant geologist, commented: *“these holes are particularly significant as they confirm possibly economic grades of gold over one kilometer south of the Sinivit Southern Oxide Pit. Hole MRC01 terminated at 20m depth with 1% copper assayed between 18m and 20m. The Mengmut zone was also defined as a possible sulphide and quartz system by the IP survey completed in 2010. A previous drill hole in the late 1980’s in the general area also intersected gold plus copper and tellurium. The significant zones in the above holes will be assayed for other elements such as tellurium and molybdenum.”*

FIGURE 1



All samples are partly prepared at site by splitting to 500 grams. Further preparation and analysis is completed at accredited laboratory, ALS Chemex laboratories, in Townsville, Queensland, Australia.

The information in this release was prepared under the direction of Robert D. McNeil a Fellow of the Australasian Institute of Mining and Metallurgy and a “qualified person” as defined by National Instrument 43-101. Mr McNeil has read and approves the information contained herein.

Full details of Sinivit are described in an Independent National Instrument 43-101 report dated January 2006 which is available at [www.newguineagold.ca](http://www.newguineagold.ca)

For further information on this release or on other NGG projects such as the Sinivit Gold Mine, contact [info@newguineagold.ca](mailto:info@newguineagold.ca), or access our website – [www.newguineagold.ca](http://www.newguineagold.ca)

ON BEHALF OF THE BOARD

Ces Iewago  
ACTING CEO

Neither TSX Venture Exchange nor its Regulation Services Provider (as that term is defined in the policies of the TSX Venture Exchange) accepts responsibility for the adequacy or accuracy of this release.

Forward Looking Statements - Certain information set forth in this news release may contain forward-looking statements that involve substantial known and unknown risks and uncertainties. These forward-looking statements are subject to numerous risks and uncertainties, certain of which are beyond the control of NGG, including, but not limited to the impact of general economic conditions, industry conditions, volatility of commodity prices, risks associated with the uncertainty of resource and reserve estimates, currency fluctuations, dependence upon regulatory approvals, the availability of future financing and exploration risk. Readers are cautioned that the assumptions used in the preparation of such information, although considered reasonable at the time of preparation, may prove to be imprecise and, as such, undue reliance should not be placed on forward-looking statements.